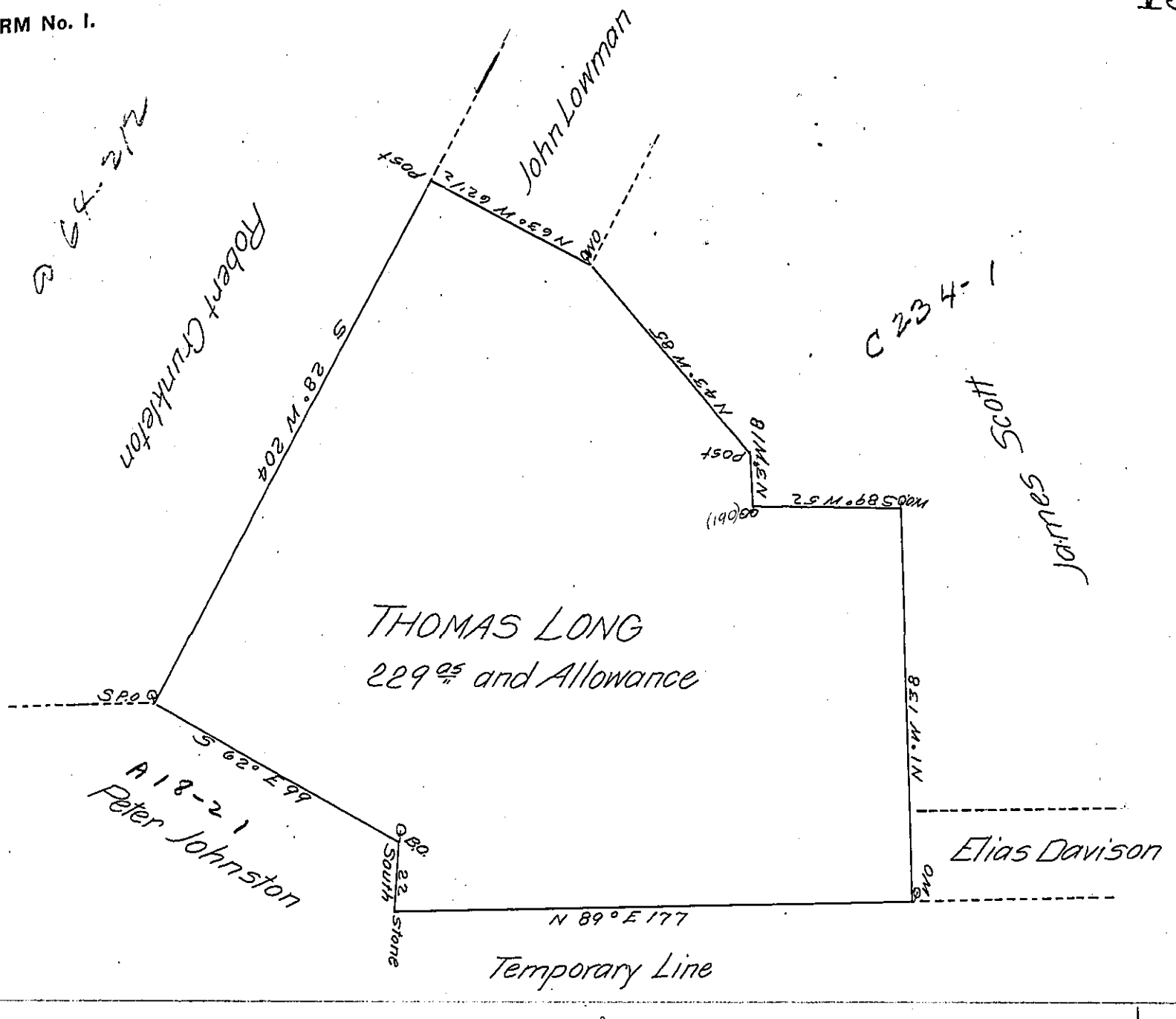


FORM No. 1.



A Draught of a Tract of Land Situate in Antrim Township Cumberland County containing Two hundred and Twenty nine Acres and the Usual Allowance of Six Acres P Cent for Roads Survey'd the 10th Day of December 1767 for Thomas Long in pursuance of a Warrant Dated the 19th Day of October 1752

To John Lukens Esq^r }
 Surveyor General } John Armstrong
 D.S.

IN TESTIMONY that the above is a copy of the original remaining on file in the Department of Internal Affairs of Pennsylvania, made conformably to an Act of Assembly approved the 16th day of February, 1833, I have hereunto set my Hand and caused the Seal of said Department to be affixed at Harrisburg, this twenty second day of September 1905

Loac R Brown
 Secretary of Internal Affairs.